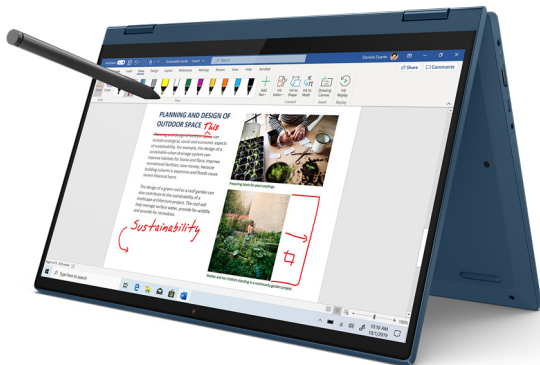
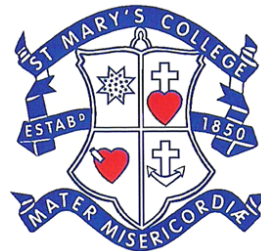


# Harvey Norman®

**BYOD** BRING YOUR OWN DEVICE *for Education*



## LENOVO IDEAPAD FLEX 5 + ACTIVE PEN

- AMD Ryzen™ 3 4300U quad-core processor
- 4GB RAM • 128GB SSD storage
- AC WiFi + Bluetooth • 14" Full HD Touch display
- USB-C port, 2 USB ports, HDMI, Headphone jack
- Webcam • Up to 12 hours battery life\*
- Running Windows 10S

\*Battery life varies depending on power settings, specifications and usage.

**BUNDLE DEAL**  
**\$1243**

LENOVO IDEAPAD FLEX 5 + PEN  
+ TARGUS EDU SLIPCASE +  
2 YEAR PRODUCT CARE

**PRODUCT CARE \$147**  
**2 YEAR PRODUCT CARE EXTENSION**

**\$1048**

Device only  
(82200)

**Targus®**  
**RUGGED CASE**  
**DESIGNED FOR**  
**EDUCATION**



**INCLUDED**  
**IN**  
**BUNDLES**

- Available in 12" & 14" sizes
- Reinforced side panels
- Shock-absorbing compartment
- Designed to fit within backpacks

**\$44**

(12" 3700941)

**\$48**

(14" 3680793)

**12 Months**  
INTEREST FREE\*1

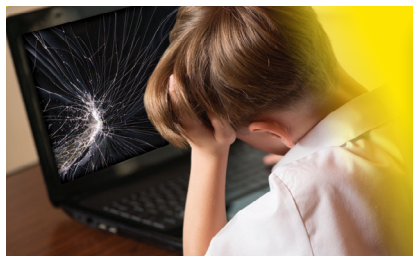
OR

**NO INTEREST +**  
**NO REPAYMENTS**  
**FOR 6 Months**\*2

OR

**genoapay**

Get it now, Pay over  
10 weeks.\*3



## Accidental Damage Cover

Protect your child's BYO devices  
from life's little accidents.

Ask in store  
for details



**brightside**  
cover

# Harvey Norman®

**BYOD** BRING YOUR OWN DEVICE *for Education*

Visit your local store:

Call 0800 464 278 (0800 GO HARVEY) for your nearest store

DICE CODE: MOE093766568

Offer valid until 28 February 2021 or while stocks last. Pricing only valid for the school listed above. ^STF Education Customer is defined as at New Zealand K-12 Student, Teacher, School, purchaser must provide a NZ School Email, or Student ID. (ie. school.nz, or .ac.nz) \*1. 12 months interest free. Minimum purchase \$500. From no deposit. Amount payable will be shown on your monthly statement. Normal credit and lending criteria and fees including \$55 establishment fee and annual fee (\$52 Gem Visa / \$50 Gem Creditline) apply. Paying only the minimum monthly repayment of 3% of the outstanding monthly balance or \$20, whichever is more, will not be sufficient to repay the purchase amount(s) within the promotional period. Prevailing interest rate (currently 25.99% p.a. Gem Visa / 29.95% p.a. Gem Creditline) applies to any outstanding balance on the expiry of the interest free period. Gem Visa and Gem Creditline are provided by Latitude Financial Services Limited. Finance offers not available on Commercial pricing. See store for details. \*2. 6 months interest free deferred payment. Minimum purchase \$250. From no deposit. Amount payable will be shown on your monthly statement. Normal credit and lending criteria and fees including \$55 establishment fee and annual fee (\$52 Gem Visa / \$50 Gem Creditline) apply. Prevailing interest rate (currently 25.99% p.a. Gem Visa / 29.95% p.a. Gem Creditline) applies to any outstanding balance on the expiry of the interest free period. Gem Visa and Gem Creditline are provided by Latitude Financial Services Limited. Finance offers not available on Commercial pricing. See store for details. \*3. Available on purchases between \$20 to \$1000. Excludes Miele Whiteware/Cookware, Gift cards and ePay Vouchers. Terms and conditions apply. Accidental Damage will be available from 10/11/2020.

# IT'S LEARNING, REVOLUTIONISED!

Bring Your Own Device refers to students bringing their own laptop or tablet to school for the purpose of learning.

In doing so this encourages students to collaborate 24/7 learning and education both inside and outside the classroom.

## WHAT ARE THE BENEFITS FOR YOU AS PARENTS?



KNOWLEDGEABLE  
STAFF



WARRANTY  
COVER



COMPETITIVE  
PRICING



PREFERRED  
SERVICING



IN STORE  
PURCHASING



INTEREST FREE \*1 \*2 \*3  
PAYMENT OPTIONS



### LENOVO IDEAPAD FLEX 5 + ACTIVE PEN

- AMD Ryzen™ 3 4300U quad-core processor
- 8GB RAM • 256GB SSD storage • AC WiFi
- Bluetooth • 14" Full HD Touch display
- USB-C port, 2 USB ports, HDMI, Headphone jack
- Webcam • Up to 12 hours battery life\*
- Running Windows 10S

\*Battery life varies depending on power settings, specifications and usage.

**BUNDLE DEAL**  
**\$1353**

LENOVO IDEAPAD FLEX 5 + ACTIVE  
PEN + TARGUS EDU SLIPCASE  
+ 2 YEAR PRODUCT CARE

PRODUCT CARE\* \$161  
2 YEAR PRODUCT CARE EXTENSION

**\$1148**

Device only  
(82201)

## Targus® RUGGED CASE DESIGNED FOR EDUCATION



**INCLUDED  
IN  
BUNDLES**

- Available in 12" & 14" sizes
- Reinforced side panels
- Shock-absorbing compartment
- Designed to fit within backpacks

**\$44**

(12" 3700941)

**\$48**

(14" 3680793)

## STILL HAVE QUESTIONS?

Just pop in store and  
talk to our friendly team

*We're here to help!*



**Harvey Norman®**  
**BYOD** BRING YOUR OWN DEVICE *for Education*

Visit your local store:

Call 0800 464 278 (0800 GO HARVEY) for your nearest store

DICE CODE: MOE093766568

Offer valid until 28 February 2021 or while stocks last. Pricing only valid for the school listed above. \*STF Education Customer is defined as a New Zealand K-12 Student, Teacher, School, purchaser must provide a NZ School Email, or Student ID. (ie .school.nz, or .ac.nz)