



St Mary's College

11 New Street, Ponsonby,
Auckland 1011



International Student College Handbook 2026

A WELCOME FROM THE PRINCIPAL – MS SARAH DWAN



Dear Parents/Caregivers

We welcome you and your family into the St Mary's College community and thank you for choosing our college to educate your daughters. We are a Catholic integrated school for girls, offering an education for students from Year 7 to Year 13.

St Mary's College offers a wonderful environment for your daughter to learn, grow and realise her potential. The College provides a high-quality academic education with extensive co-curricular opportunities and aims to instil in young women a strong sense of self-esteem, confidence, and service.

As the oldest school for girls in New Zealand, St Mary's College has enjoyed a long tradition of academic excellence with graduates moving on to further their studies across a wide variety of disciplines. A holistic education has been key to the success of Mercy education since its inception in Ireland in 1831.

We aim to educate our students to be "*21st Century Women of Mercy*", prepared for the changing world and with a focus on reaching out to others.

St Mary's College is a very special place, and we are delighted to share it with you and your family.

Yours in Mercy

A handwritten signature in black ink, appearing to read 'Sarah Dwan'.

Sarah Dwan
Principal

SPECIAL CHARACTER OF ST MARY'S COLLEGE

St Mary's College is a Catholic School from Years 7-13 with a Mercy charism. There is a strong tradition of successfully preparing young women to make a difference through academic success, holistic education and the building of strong Mercy values. We are a forward-thinking school with a strong use of technology, excellent facilities, and supportive staff.



The College will provide an excellent education for students enabling them to take their place in society as confident, life-long learners and as women who uphold the Mercy tradition of compassion and social justice.

SCHOOL MASS

Several times a year the whole school celebrates Mass (special religious service) together, either at school or at St Patrick's Cathedral. Mass takes place in our school chapel most Thursday's and each junior Religious Education class, supported by senior students, prepares a Thursday lunchtime Mass throughout the year.

RELIGIOUS EDUCATION (RE)

Religious Education (RE) is a compulsory subject at all year levels and taught about three times a week. In years 11-13, RE offers valuable NCEA credits through assessments that are based on students' learning and graded by their teacher. Unlike other subjects, RE may not have end-of-year external exams.

Religions around the world include Christianity, Buddhism, Muslim, Catholic and many others. We understand that most international students are not religious and all religious beliefs are valued and respected at St Mary's College. All students will take part in a one-day (overnight in Year 13) Retreat where students get to reconnect and reflect on the purpose of life with their peers.

SISTERS' OF MERCY, ST MARY'S COLLEGE

EDUCATION PHILOSOPHY

Mercy Education seeks to:

- Give scope for fullness of growth in body, mind and spirit
- Respect the uniqueness, giftedness and culture of every person
- Educate for justice that arises from awareness and compassion, and works towards restoring right relationships with God, self, others and all creation
- Recognise Māori as tangata whenua and actively promote Te Tiriti o Waitangi as the partnership covenant fundamental to Aotearoa New Zealand
- Develop consciousness of the interrelatedness and interdependence of all people and all creation
- Express the mercy and justice of Jesus in interrelationships, structures and school community endeavours through practising mutuality, trust, collaboration and openness, rather than approaches which are exclusive, authoritarian or competitive
- Promote excellence, integrity and commitment in all teaching, student and school endeavours
- Provide an experience of a prayerful Catholic and Christian learning community that is open to the realities and needs of the local, national and world communities
- Encourage, through the school learning community experience, a desire for lifelong growth in faith, and in the fullest use of each person's gifts for the transformation of the earth in Christ.

2026 MERCY VALUE – TE ĀWAHINATANGA - SERVICE

Continuing the work of Catherine McAuley through:

- Confidence in God's presence and action
- Serving the Church
- Courageous discipleship
- Understanding and Compassion
- Integrity and Goodness
- Proclaiming Jesus Christ in our time and culture



“We must strive to do ordinary things extraordinarily well”
Catherine McAuley

SCHOOL INFORMATION

SCHOOL HOURS

The school day begins at 8.40am (Term 1 Mondays begin at 8.35am) and finishes at 3.05pm for years 7-9 and 3.10 for years 10-13. All students are expected to be in their Form Time class for 8.35am.

Each Friday morning staff are involved in Professional Development from 8.15am to 8.50am. Students are required to be at school by 8.45am on Fridays ready for classes to start at 8.55am

DAILY TEACHING TIMETABLE TERM 1

	MONDAY	TUESDAY	WEDNESDAY	THURSDAY	FRIDAY
Form time	8.35am to 9.00am	8.40am to 8.55am	8.40am to 8.55am	8.40am to 8.55 am	no form time. warning bell at 8.50am
Period 1	9.00am to 10.00am	8.55am to 9.55am	8.55am to 9.50am	8.55am to 9.55am	8.55am to 9.55am
Period 2	10.00am to 11.00am	9.55am to 10.55am	9.50am to 10.45am	9.55am to 10.55am	9.55am to 10.55am
Morning interval	11.00am to 11.20am	10.55am to 11.20am	10.45am to 11.05am	10.55am to 11.20am	10.55am to 11.20am
Period 3	11.20am to 12.20pm	11.20am to 12.20pm	11.05am to 12.00pm	11.20am to 12.20pm	11.20am to 12.20pm
Period 4	12.20pm to 1.20pm	12.20pm to 1.20pm	12.00pm to 12.50 pm	12.20pm to 1.20pm	12.20pm to 1.20pm
Assembly			12.55pm to 1.40 pm		
Lunchtime	1.20pm to 2.10pm	1.20pm to 2.10pm	1.40pm to 2.20pm	1.20pm to 2.10pm	1.20pm to 2.10pm
Period 5	2.10pm to 3.05pm (y7-9) 2.10-3.10 (y10-13)	2.10pm to 3.05pm (y7-9) 2.10-3.10 (y10-13)	2.10pm to 3.05pm (y7-9) 2.10-3.10 (y10-13)	2.10pm to 3.05pm (y7-9) 2.10-3.10 (y10-13)	2.10pm to 3.05pm (y7-9) 2.10-3.10 (y10-13)

DAILY TEACHING TIMETABLE TERM 2, 3 AND 4

	MONDAY	TUESDAY	WEDNESDAY	THURSDAY	FRIDAY
Form time	8.40am to 8.55am	8.40am to 8.55am	8.40am to 8.55am	8.40am to 8.55am	no form time. warning bell at 8.50am
Period 1	8.55am to 9.55 am	8.55am to 9.55am	8.55am to 9.50am	8.55am to 9.55am	8.55am to 9.55am
Period 2	9.55am to 10.55am	9.55am to 10.55am	9.50am to 10.45am	9.55am to 10.55am	9.55am to 10.55am
Morning interval	10.55am to 11.20am	10.55am to 11.20am	10.45am to 11.05am	10.55am to 11.20am	10.55am to 11.20am
Period 3	11.20am to 12.20pm	11.20am to 12.20 am	11.05am to 12.00pm	11.20am to 12.20 am	11.20 to 12.20pm
Period 4	12.20pm to 1.20pm	12.20pm to 1.20pm	12.00pm to 12.55pm	12.20pm to 1.20pm	12.20pm to 1.20pm
Assembly			12.55pm to 1.40 pm		
Lunchtime	1.20pm to 2.10pm	1.20pm to 2.10 pm	1.40pm to 2.20pm	1.20pm to 2.10 pm	1.20pm to 2.10 pm
Period 5	2.10pm to 3.05pm (y7-9) 2.10-3.10 (y10-13)	2.10pm to 3.05pm (y7-9) 2.10-3.10 (y10-13)	2.10pm to 3.05pm (y7-9) 2.10-3.10 (y10-13)	2.10pm to 3.05pm (y7-9) 2.10-3.10 (y10-13)	2.10pm to 3.05pm (y7-9) 2.10-3.10 (y10-13)

BEFORE ARRIVING

BUYING SCHOOL UNIFORM (short term students can wear their own school uniform)

Bring a credit card to buy school uniform if you are a long-term student (one term students wear their own school uniform). Second Hand uniforms cost approx. \$300.00 (bought from shop at school). Some students have funds at school to pay for this.

New uniforms are purchased off-site at Prestidges, 65 New North Road, Eden Terrace, Auckland. 09 358 1680. <https://prestidges.co.nz/school-wear/>



SHOES and SOCKS

Black lace up shoes need to be worn with WHITE ankle socks in Years 7-11 and BLACK ankle socks in Years 12-13. Black stockings can be worn in Terms 2-3.

STATIONERY AND WORKBOOKS

Bring pen and paper to school for your first days. International staff plan on ordering subject workbooks prior to school starting and having it delivered to your homestay or home address through the Office Max website. You will also need a Graphic calculator (from year 10) and Art supplies if you are taking Art (ordered through school).

SWIMMING & PHYSICAL EDUCATION (PE)

Years 7-10 has compulsory swimming. One piece swimming costume (togs) and any colour swim cap (which can be purchased from school) are required. All long term students purchase PE uniform but all short-term students need to bring shorts, T- shirt and sneakers for PE (like in this picture on the right)



AUCKLAND TRANSPORT (AT) HOP CARD

Students will need an Auckland Transport (AT Hop Card) used for buses and trains. These can be purchased at most small grocery shops (called a “dairy” in NZ). Students need to apply for a student concession to get cheaper transport. This is done online or with a student ID card issued from school.

BRING YOUR OWN DEVICE (BYOD) – PLEASE MAKE SURE ALL STUDENTS HAVE A “WINDOWS” COMPATIBLE DEVICE – UNLOCKED AND SET TO ENGLISH

We don't recommend bringing Ipads or Chromebooks to use at school – of course they can be used in the student's home. Ipads and Chromebooks use a web version so it limits the use of the Office 365 Apps that can be downloaded and used at school i.e. Teams.

The school can make an Apple Macbook work however the updates are not in sync with Windows so they are not as reliable but is better option than an iPad.

MUSICAL INSTRUMENTS

It is encouraged, if possible, that students bring their own instruments if they are intending to be involved in the music programme (instruments can be hired, depending on availability).

HOUSE & BUDDY ALLOCATION

Each new student is allocated a buddy at the start of school. The new student will be in the same “House” as their buddy and may need to purchase a T-shirt in their house colour. The Houses are Dickson (yellow), Leo (red), Loreto (purple), Maher (green) and Leydon (white). You will find out your buddies house at the start of the year.



TIPS

- Bring warm clothes – even in Summer, Auckland can be cold
- If coming for the year... bring some black stockings for winter
- St Mary's is a phone free school so you are not able to use your phone during school hours. You must get a NZ Sim when you arrive.

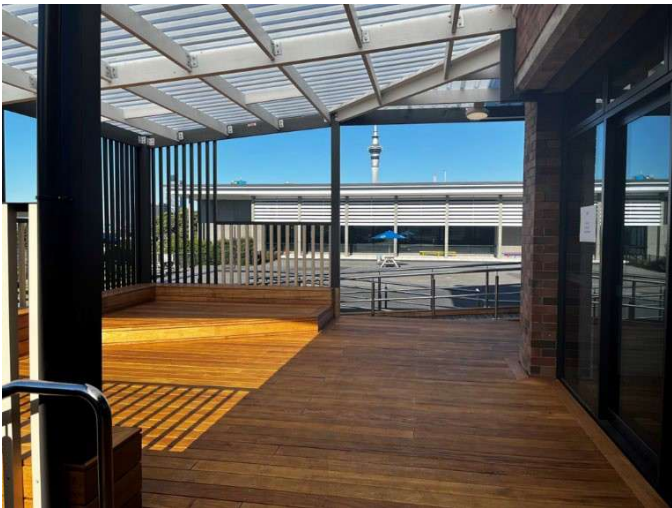
SENIOR LEADERSHIP TEAM

Principal	Sarah Dwan	principal@stmaryak.school.nz
Deputy Principal - Teaching and Learning	Aneta Dezoete	adezoete@stmaryak.school.nz
Deputy Principal - Pastoral	Elena Grant	egrant@stmaryak.school.nz
Assistant Principal	Sharon Davies	sdavies@stmaryak.school.nz
Assistant Principal	Janet Williams	jwilliams@stmaryak.school.nz

DEANS

Year 7 Dean	Daniel Ting	dting@stmaryak.school.nz
Year 8 Dean	Monique Williams	mwilliams@stmaryak.school.nz
Year 9 Dean	Tim Atkinson	tatkinson@stmaryak.school.nz
Year 10 Dean	Bev Steward	bsteward@stmaryak.school.nz
Year 11 Dean	Dora Salesa	dsalesa@stmaryak.school.nz
Year 12 Dean	Nicole Paulin	npaulin@stmaryak.school.nz
Year 13 Dean	Charlotte Murray	cmurray@stmaryak.school.nz
International Dean	Bev Steward	bsteward@stmaryak.school.nz

VIEWS FROM AROUND THE SCHOOL



INTERNATIONAL OFFICE STAFF



Mrs Sue King – International Student Director

Tel: +64 9 376 6568 ext. 817

Mob: +64 21 157 8776

sking@stmaryak.school.nz

Mrs King is the Director of International Students and manages all student welfare including helping with insurance claims, visa applications and health and medical queries. She makes sure that students are involved and happy at school and that they have the information and support they need to be academically successful and prepared for their next phase of life, after St Mary's College.



Ms Beverley Steward – International and Year 10 Dean

Mob: +64 21 025 05758

bsteward@stmaryak.school.nz

Ms Steward is the International and Year 10 Dean as well as Teacher of ESL (English as a Second Language). She ensures that the students are supported in their English language and are achieving the academic standards to gain NCEA. Ms Steward monitors attendance, advises on subject choices and helps students access extra tutoring or courses, if needed, to be assured of academic success.



Ms Alice Caiger – Homestay Coordinator

Tel: +64 9 376 6568 ext 817

Mob: +64 204 060 5024

acaiger@stmaryak.school.nz

Miss Alice checks and makes sure students' accommodation is at a safe and acceptable standard and that students are happy and settled. She is available on text and email and all students are encouraged to reach out to her with any concerns. She will interview and meet with students regularly to ensure that they are comfortable in their homes.



Ms Chou – International Counsellor (2 days TBC)

+64 9 3766568 ext. 818

tchou@stmaryak.school.nz

STUDENT SUPPORT NETWORK

BUDDIES ON ARRIVAL

From their first day at school, new students are assigned a buddy who will be in the same form class as their student and help them find their way around the school. They will meet their student at morning tea and lunchtime to sit with them. The buddy may not be in all the new student's classes which is when the teacher will allocate another student to help them. The buddies will help students sign up to clubs, sports and music.



SCHOOL NURSE ON SITE

Students who are sick or injured go to the nurse. If discomfort prevents the student from returning to class, the nurse will call the parent or homestay parent to have the student collected and taken home. International students can also register with a medical practice near the school and the international staff can take them to see a doctor, usually within the same day.

CAREERS AND UNIVERSITY CONSULTING

There are so many options for our students to pursue in terms of the study or careers they will move into after St Mary's College.

The school has a Careers Adviser who is available by appointment and works closely with Year 12 and 13 students to help navigate them through their pathway choices. Each year the adviser will invite the main university providers to come to the school to talk about options and courses. Every second year the school puts on a Career Expo where many tertiary providers and employment opportunities are showcased.

There is extra career support for international students. The international department works with Look Education New Zealand (LENZ) who specialise in consulting with international students while studying in New Zealand. If requested, a representative will work with individual students to help with course selection for future employment options, apply to any university in NZ or around the World and provide visa and immigration advice.

COMMUNICATION

MOBILE PHONES

St Mary's is phone free. Students can use their phone before and after school but not during school. If students choose to bring a mobile phone to school, it is the responsibility of each student to ensure the security of these during school hours.

Whilst in NZ, students will need a phone with a New Zealand Sim card and number (the most common are Vodafone and Spark).

The IT department will help set up phones to receive notifications from EMAILS & TEAMS messages

You will download these Apps on your phone:



BYOD PROGRAMME (BRING YOUR OWN DEVICE)

Each student (except for Year 7) will bring a Windows compatible device or laptop to school everyday. **We don't recommend bringing Ipads or Chromebooks to use at school – of course they can used in the student's home.**

Ipads and Chromebooks use a web version so it limits the use of the Office 365 Apps that can be downloaded and used at school i.e. Teams.

The school can make an Apple Macbook work however the updates are not in sync with Windows so they are not as reliable but is better option than an IPad.

During Orientation, the IT department will install Office 365 and help the students get their device ready to use.

DEVICES NEED TO BE SET IN ENGLISH:

Initial Setup of Device

Before starting at St Mary's College: wireless or wired internet access is required to complete this setup.

1. Turn on your new device. If you are prompted with regional setting, please choose the right Region
2. If you are prompted with the keyboard layout setting, choose the keyboard layout: We usually use US keyboard

Note: You can add another keyboard layout or choose Skip to continue.

Parent/Student Portal on KAMAR

KAMAR is what our school uses to access your time table, academic record, attendance (48 hour delay) and a calendar of events.

To access the portal, you will need to go into <https://stmaryak.kamar.nz/>

Once you are there, you will be asked your username and password. The username for the student portal is the student's first and last name. All students will be issued with their password.

We will install Office 365

- The school and teachers will communicate with you through your school EMAIL and MICROSOFT TEAMS.
- Your school work will be on your class ONENOTE

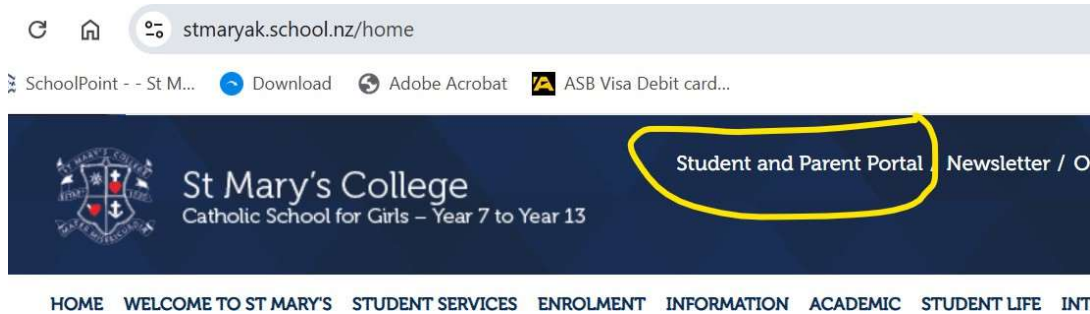


We will make sure you get notifications of TEAMS and EMAILS – you must read the posts or you will miss out on important information

ACCESS TO THE STUDENT PORTAL for Parents and Students

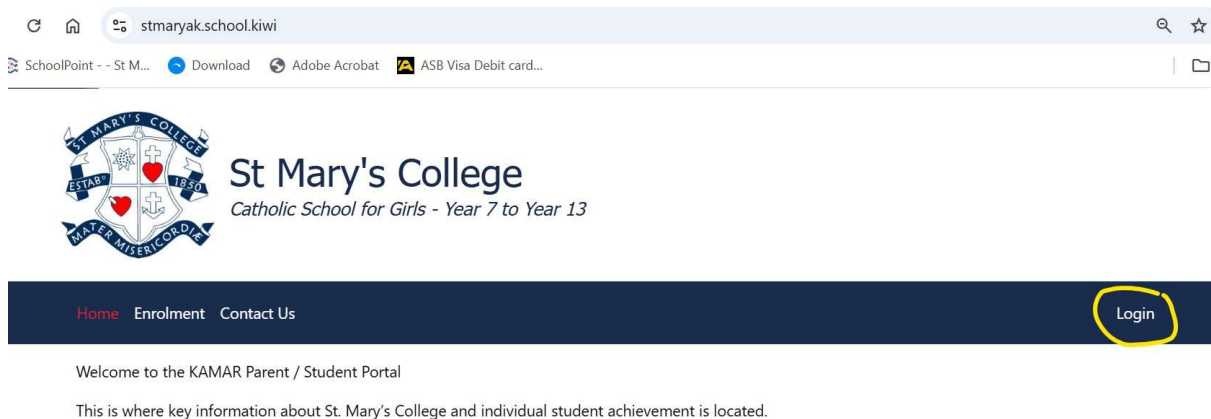
Please go to the St Mary's College website: www.stmaryak.school.nz

Click on "Student and Parent Portal"



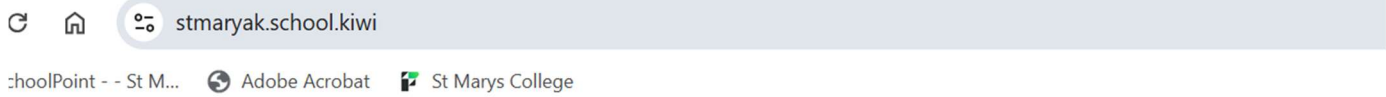
You will be directed to a website: stmaryak.school.kiwi

Please click "Login"



Enter **student's username** and **password** and click "Login" to proceed. This will be provided by the school

You will then be directed to the content of the portal where you can access various info :



St Mary's College
Catholic School for Girls - Year 7 to Year 13

[Home](#) [Notices](#) [Calendar](#) [Details](#) [Surveys](#) [Interviews](#) [Achievements](#) [Events](#)

Welcome

Welcome to the KAMAR Parent / Student Portal

This is where key information about St. Mary's College and individual student achievement is located.

Please note that the Calendar tab contains the Senior Assessment Calendar. A list of key College dates and events can be found in the Calendar tab. We appreciate that this is not an ideal solution but is a work around to ensure that the information is available to families.

Assessment results and Reports are located in the Results/Reports tab.

SCHOOLBRIDGE APP – FOR ALL PARENTS/CAREGIVERS & STUDENTS



We use SchoolBridge to manage student forms and permission slips. All forms will be emailed to the address or addresses linked to your daughter's KAMAR account. Each email will include a link—simply click it to be taken to the SchoolBridge sign-in page.

The SchoolBridge app is an easy way to stay informed about school events, trip notifications, and other updates. Please make sure notifications are enabled.

Parents and caregivers should download the app, as it is the most effective way to receive school information, get timely notifications, and provide consent for trips and activities.

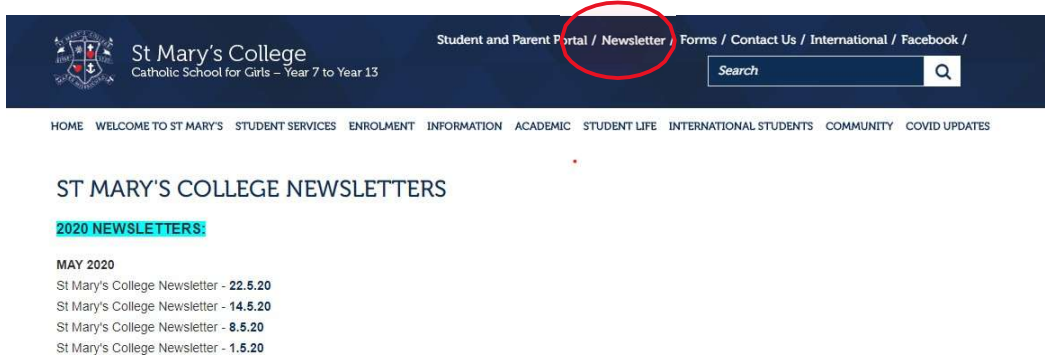
Students also need to download the app so they can access their timetable, school calendar, and daily notices. They can also view upcoming trips and any permission slips that require attention.

To access the app Scan the QR code or [click here](#)



NEWSLETTER

We believe you should be well informed about the College. Each week parents and homestays will be emailed the College newsletter which contains information about College activities, parent evenings, community notices and other matters of interest. The newsletter is found on St Mary's home page. Select the week you want to view in your web browser and translate if necessary using the Translate button, as below.



The newsletter can be translated.



REPORTING TO PARENTS

Twice during the year Junior and Senior reports are sent to parents. One will be an overview of the students' progress and making sure they are meeting expectations while the second one will be more detailed with teacher comments.

There are also student-parent-teacher conferences held for all students and parents. More information will be available about these in the school newsletter. If a parent ever wants information about the progress of their daughter, they can email the International Student Director sking@stmaryak.school.nz

Senior students will also receive an individual NCEA tracking sheet in the middle of the school year. It is important for students to review where they are at, if they are likely to achieve and what they need to review or work on for the next part of the year.

CODE OF CONDUCT FOR INTERNATIONAL STUDENTS

The Student Code of Conduct, and in the international student contract, is a condition of entry into St Mary's College stating the underlying principles that students show respect for others and do quality work. These include the expectation that students respect staff, other students, property, the school uniform and that they attend school each day and all classes punctually. They must be equipped for all lessons, do quality work and the homework set in each subject and always behave responsibly when representing the school.

Student Code of Conduct

International students, whilst enrolled at St Mary's College, are not permitted to drink alcohol, smoke cigarettes including e-cigarettes, own or drive motorcars or motorcycles.

1. I will work to the best of my ability.
2. I will respect the right of others to learn.
3. I will respect the person and property of every other member of the school community.
4. I will care for the school environment. This includes the grounds and shared spaces such as bathrooms and locker areas.
5. I will show courtesy and respect towards all staff, and I will meet all their requirements in and out of the classroom.
6. I will arrive at school on time and attend all classes punctually.
7. I will wear my school uniform correctly and tidily, with pride at all times. This includes during the day, travelling to and from school, and events I attend after school hours.
8. I will be properly equipped for all lessons and do the homework set in each subject.
9. I will not bring into the school grounds or buildings: alcohol, drugs, offensive or dangerous weapons, cigarettes (including vapes), lighters or matches or use them on any school occasion, or at any time when I am wearing my school uniform.
10. I will behave responsibly when representing the school and will obey the rules set for school teams and functions.
11. I will travel to and from school by the most direct route without stopping unnecessarily.
12. I will be courteous and helpful to school visitors and to members of the public, on the street and in public transport.
13. I will not bring gum to school, and I will not chew gum while at school or while in uniform.
14. I will ensure that my personal property such as mobile phones and headphones are not to be used or seen during class, without explicit permission from the teacher.
15. I will obtain permission from the school before I drive a car to school (Not applicable to International Students).
16. I will not leave the school grounds without permission during the school day. This includes to shift my parked car.
17. I will take responsibility for my personal property.
18. I will keep my passwords private and confidential.
19. I will respect staff and students in my digital space. This includes when I am using social media and group chats.

Code of Conduct for an International Student

1. I understand that while enrolled at St Mary's College, I am not permitted to consume alcohol, smoke cigarettes (including e-cigarettes or vaping devices), or own or drive a motor vehicle or motorcycle.
2. I am not allowed to have any visible tattoos or body piercings, except for one piercing in each earlobe for a school-approved stud earring.
3. I must obtain written permission from the International Department before seeking part-time employment during the academic year or scheduled holidays. I understand that all visa conditions and employment regulations must be followed. If my part-time work negatively affects my academic performance, my working hours may be reduced to ensure my focus remains on my studies.
4. I agree not to travel as a passenger in a car driven by someone who holds a Restricted Licence.

5. If I am in Year 13 and not living with my natural parents, I may apply for a driving licence, complete the theory test, and undertake professional driving lessons outside of school hours in preparation for my Restricted Licence. I understand that written permission from both the school and my parents is required before beginning any lessons or taking tests. I am not permitted to sit the practical driving test for the Restricted Licence until after I have graduated from the school.
6. I agree to maintain a minimum attendance rate of 95% throughout the school year.
7. I agree to use a St Mary's College-approved device, which I will bring to school fully charged and set to English.
8. I agree to have a New Zealand SIM card and active phone number with sufficient credit, ensuring I am contactable at all times.

Important Rules

- I agree to make sure my homestay or parent tells the school and Mrs King when I am sick or away – (attendance@stmaryak.school.nz and sking@stmaryak.school.nz) or through Schoolbridge
- Swimming togs (one piece) and cap (can be purchased from school) are required T1 (and 4) (unless we have a note to say we can't swim). Swimming is compulsory for years 7-10.
- Uniform must be worn correctly (or risk getting a detention) that includes the correct black lace up shoes or sandals, no jewellery (except for religious pieces and one set of ear studs), no makeup and no nail polish
- Hair is tied up off the face
- Blazers are usually worn on Wednesday for school assemblies (keep them in your locker)
- There is to be no posting of photos on social media wearing your school uniform and no posting of personal content of any other student or teacher at SMC without their permission.
- No leave taken in term time, unless requested in writing with two week's notice.
- All flight information must be sent to Miss Alice so we know when a student is leaving the country and returning.
- I agree to always submit my own work and will not use AI, dictionaries or translators unless my teacher allows it.

ST MARY'S COLLEGE MUSIC PROGRAMME



St Mary's College is proud of its strong musical tradition. All students in Year 7-9 learn an instrument for three years and play in an band/orchestra (St Mary's College Compulsory Music Scheme). Students have a one-hour timetabled lesson a week on Thursday morning. In addition, they have one half-hour small group lesson with an Itinerant Teacher of Music during which they come out of class. Extension/Senior Ensembles are available for students who can already play their instrument or who want to continue playing past Year 9.

Instruments available to learn:

Wind Instruments

Clarinet
Flute
Saxophone
Trombone
Trumpet

String Instruments

Violin
Viola
Cello
Double Bass

Percussion Instruments

Glockenspiel

Read more about the Music Department by clicking on [this link](#).

INSTRUMENT	RENTAL PER YEAR	INSTRUMENT	RENTAL PER YEAR
Violin (all sizes)	\$150.00	Saxophone	\$275.00
Viola (14", 15" & 16")	\$190.00	Cello (1/2, 3/4, 3/4, 4/4)	\$310.00
Flute	\$155.00	French Horn	\$285.00
Clarinet	\$155.00	Oboe	\$285.00
Trumpet	\$155.00	Percussion	\$85.00
Trombone	\$155.00	Tuba	\$110.00
Euphonium	\$285.00	Double Bass	\$110.00
Baritone Horn	\$155.00	Bassoon	\$285.00

TRAVEL INFORMATION – SCHOOL BUSES

Travelling on these buses is a commercial arrangement between the companies and Parents/Caregivers. Below are some options and the trips cost about \$60 per week.

More information available from the international department

Coachways NZ

David Marsden on david.marsden@coachways.co.nz or

William Hudson on william.hudson@coachways.co.nz - Ph. 09 276 4130

003 Bus Run Papatoetoe/Otahuhu/Panmure/Ellerslie/Greenlane

005 Bus Run Drury/Papakura/Manurewa/Manukau

006 Bus Run Mangere/Onehunga/Mount Eden

www.coachways.co.nz



NZ Bus/Auckland Transport

operations.occ@nzbus.co.nz - Ph. 09 373 9118

500 Bus Run Point Chevalier Beach/Herne Bay/Westmere (after school only)

501 Bus Run Custom Street (Britomart) to School- Click here for more information.

Kiwi Coaches

schools@kiwicoaches.co.nz - Ph. 09 636 5232

001 Bus Run New Lynn/Glen Eden/Titirangi/Hillsborough/White Swan/Richardson/
Waterview Tunnel/Ponsonby

002 Bus Run Green Bay/Godley/Connaught/Blockhouse Bay/Great North/Point Chevalier/Garnet/Cox's Bay/
Jervois

For more details please visit www.kiwicoaches.co.nz

Prestige Transport

Lia Warner - lia@warner.org.nz – Ph. 027 788 7745

A private bus run from Henderson Valley/Glen Eden/Te Atatu South/St Mary's

AT HOP CARD



The AT (Auckland Transport) HOP card gets students on and off buses and trains. The homestay can help buy a card from dairies or specific shops. Once purchased they need to have a 'child' concession added to them to make travelling cheaper.

Instructions:

Login to MyAT and register your AT HOP card. If you are under 16 years of age, a child concession will be applied automatically when you register your AT HOP card with the correct date of birth. If you are aged 16-19 years you can apply for your student concession by visiting one of AT's [customer service centres](#) with a valid student ID card or apply online (see below).

<https://at.govt.nz/bus-train-ferry/at-hop-card/card-concessions-and-discounted-fares/secondary-concession-for-students-16-to-19>.

You must register your AT HOP card before you can apply for a secondary student concession

Apply for your concession Online

Make sure you have your [National Student Number](#) handy. (This is given to you by the school)

Step 1: Submit your secondary student concession application.

In your MyAT account, under "View all cards":

Select the card you want to apply the secondary student concession to Select the "Available products" tab

Select "Apply for a concession". Choose "Secondary" from the concession type list and complete the application form

Step 2: You will receive an email when your concession is loaded

It may take 24 to 72 hours for it to be available on your AT HOP card

Step 3: Tag on to activate

You will need to tag on to an AT HOP card reader or electronic gate at a train station within 60 days for your concession to be activated on your AT HOP card.

OTHER INFORMATION

LOCKERS

Students will be allocated a locker which are situated outside the International Department. Padlocks are not provided.

STUDENT ID CARD

The school will issue a student ID card. The ID card can be used for school printers, student discounts on public transport (AT Hop Cards) and student discounts for selected providers. ID cards can be initially registered by swiping at a photocopier. There is a top up, pay-in coin machine in the Library (\$5 in coins provides sufficient copies). Students should ensure that they have an adequate balance available for printing and copying as required.

CELL PHONES

If students choose to bring a cell phone to school, it is the responsibility of each student to ensure the security of these during school hours. Students may only use their phone before the 8.35am bell and after school. This also applies to earphones/buds/pods. If a student is seen using a mobile phone during class time or during a break, it will be confiscated and given to the office. If the student has had the phone confiscated one or two times, they may retrieve it at the end of the day from the office. If it has been confiscated three or more times the Parent/Caregiver will be notified and will need to collect it. During class, when students request to go to the bathroom, they need to use the sign-out register and place their mobile phones on the teacher's desk. Once they have returned to class, they can collect their mobile phones and sign back in. If a student needs to communicate with their Parent/Caregiver during the school day, it can be done via the school office. If Parents/Caregiver needs to contact student, please contact the school office.

HOMEWORK

Subject teachers regularly set homework. This could consist of set work on a particular subject, a long-term assignment which is worked on over a period of time or preparation for tests/examinations. Homework may consist of going over the day's lessons, learning vocabulary words and translating the work to understand it better. Each student is expected to set time aside on a regular basis to complete it. There is an expectation that international students need to do work each night to improve their English.

TIMETABLE

Each student will be given a copy of their timetable. To view it digitally, they can access their KAMAR portal. Parents can also see the timetable via the KAMAR Portal – a password will be sent via email.

TUCKSHOP

Our school cafeteria provides a variety of food before school, at interval and lunch. Charges for each item is on a board beside the café. Students can buy instant noodles from the café. There is no microwave available to heat food up.

Instead, we recommend a flask that keeps food warm.

These are available online at Briscoes, a popular store for household items

https://www.briscoes.co.nz/product/1077957/thermos-stainless-steel-food-flask-copper-470ml/?gad_source=1&gad_campaignid=20502041932&gbraid=OAAAAADhySD9Rlu0pQIKuLpq69UGiy2Pn1&gclid=EAlaIQobChMI3I6Fs_TZkAMVbvQWBR2HNSppEAQYASABEgIHNPD_BwE



ACTIVITY FEE

Students pay \$400.00 towards school related activities throughout the year. This can be used for sports/clubs/music or activities that the International Department organises from time to time.

SCHOOL BRIDGE

St Mary's College uses School Bridge which is an App allowing permission for a student to go on any school trips and take part in activities. If the parent lives with their daughter, they sometimes manage the App themselves, otherwise the International Director will manage and consent to ALL low-risk school organised trips and activities.

TERM HOLIDAYS

Each term the International Student Director will ask international students for written advice of their holiday arrangements. The student's Parent/guardian must email any proposed flight tickets and approval to leave the country. No leave is to be taken out of the school term unless permission has been given by the Director/Dean or Principal.

LIBRARY

The library is open from 8.00am to 4.30pm every day.

EXTRA ENGLISH TUITION

There is a school peer tutoring programme offered. If the International Dean recommends extra support in English or tutoring in other subjects the international department will notify the parents.

ASSEMBLIES

Most Wednesdays there is a school assembly in PK Gym, after Period 4.

Each year level has a form assembly once a week in form time. 2026 assemblies are most likely on:

Levels Assembly	Yr 7	Yr 8	Yr 9	Yr 10	Yr 11	Yr 12	Yr 13
	Tuesday CM Hall	Tuesday CM Hall	Wednesday PK Gym	Monday PK Gym	Monday CM Hall	Monday CM Hall	Tuesday CM Hall

INTERNATIONAL FORM TIME MEETING

These meetings are compulsory for all Year 9 - 13 international students and are held in CM6 at form time (8.40am) on a Wednesday.

STATIONERY

All subject workbooks will be supplied by the school. The student needs pens and pencils etc. From year 10 a graphic calculator is required which is usually paid in the school fees. The international department can order one (they cost approximately \$175.00). The student may need to pay for paints and art supplies if they do art and design.

SETTING UP A BANK ACCOUNT

The International Department or homestay can help set up a bank account. An appointment needs to be made at a bank and a proof of address letter needs to be prepared which is taken to the appointment along with the student's passport and visa. The bank then sends a letter to the student's home address which can take a week or two to set up.

INSURANCE

It is compulsory for every international student to have medical and travel insurance. If the insurance is purchased through the school, the International Department can help make a claim for you. Below is the insurance cover provided:

<https://www.insurancesafenz.com/studentsafe/student-safe-inbound-young-learners>

SCHOOL HOUSES

Each student is allocated to one of five houses for sports and cultural events. The Houses, which are named after significant Mercy women in the history of the College, are Dickson, Leo, Loreto, Maher and Leydon. Each House has a House Dean and two Year 13 Prefects to oversee activities and events throughout the year. Our House system fosters a sense of belonging, spirit, and participation.

Each student will be advised what House they belong to (which is usually the same as their buddy) prior coming to the College so they can pack a coloured T-shirt in their house colour.



SPORTS

The College has a strong sporting tradition, and all students are encouraged to participate in at least one sport each year.

Our Sports Handbook outlines the sporting codes available throughout the year : [Sports Handbook](#)

Basketball, Football, Hockey Netball, Dragonboating, Touch Rugby - register in Term 4 the previous years (closes February current year)

Cricket opens Term 4 previous year

Water Polo Senior opens and closes in Term 4 previous year

Touch Rugby (7-10), Volleyball (9-13) opens and closes end Term 3

Term 1	Term 2	Term 3	Term 4
Basketball selection	Basketball (Y7 & 8)		
	Basketball (Y9 & 10)	Basketball (Y9 & 10)	
	Basketball (U17 Open)	Basketball (U17 Open)	
	Basketball (Premier)	Basketball (Premier)	
Football selection	Football Yrs 7/8	Football Yrs 7/8	
	Football Year 9-13	Football Year 9-13	
Hockey selection	Hockey 7/8	Hockey 7/8	
	Hockey 9+	Hockey 9+	
Netball selection	Netball 7/8	Netball 7/8	
	Netball 9+	Netball 9+	
	Netball Premier	Netball Premier	
		Waterpolo 9/10	Waterpolo 9/10
Waterpolo Premier	Waterpolo 7/8	Waterpolo 7/8	
	Badminton	Badminton	
Dragonboating			
Lacrosse (Y10+)	Lacrosse (Y10+)	Lacrosse (Y10+)	
Orienteering			
	TeenFit	TeenFit	
Tennis (beginners)			Tennis (beginners)
Tennis (competitive)			Tennis (competitive)
Touch Rugby (seniors)			Touch Rugby (Y7, 8, 9, 10)
Volleyball (Y11+)			Volleyball (Y9 and 10)
Cricket 9-13			Cricket (9-13)
Swimming (competitive)			
Skiing (non beginners)	Skiing (non beginners)	Skiing (non beginners)	

CLUBS AND CO-CURRICULAR 2026 – OR START YOUR OWN!

1. Amnesty International - Advocate for human rights and work towards creating a more just world.
2. Art Club - Unleash your creativity and express yourself through various art forms.
3. Book Club - Dive into captivating stories and engage in literary discussions with fellow bookworms.
4. Concert Band - Showcase your musical talents and perform in thrilling band performances.
5. Dance Club - Move to the rhythm and learn different dance styles with a talented community.
6. Debating - Engage in thoughtful discussions and enhance your public speaking and critical thinking skills.
7. Drama Club - Unleash your inner actor or actress and participate in thrilling theater productions.
8. Duke of Edinburgh Award - Challenge yourself and develop skills through outdoor activities and community service.
9. Environment Club - Take action for a greener future and participate in eco-friendly initiatives.
10. Equestrian Club - Connect with horses and enjoy horse riding and related activities.
11. Future Problem Solving - Tackle complex issues and develop creative problem-solving skills.
12. Games Club - Connect with fellow gamers and enjoy a variety of tabletop and video games.
13. Global Citizenship Group - Foster cross-cultural understanding and engage in global issues.
14. Gospel Choir - Sing and spread joy through gospel music with a passionate choir.
15. Guitar Club - Learn to play the guitar and jam with other music enthusiasts.
16. Hip Hop Club - Learn hip hop dance moves and express yourself through urban dance styles.
17. International Social Club – Twice termly meetup where people celebrate different cultures by cooking and sharing food together.
18. Kapa Haka - Embrace Māori culture through traditional songs, dance, and performance.
19. Knitting Club - Learn the art of knitting and create beautiful handmade creations.
20. Librarian Club - Support the library and engage in activities related to books and reading.
21. Lunchtime Mass - Attend and participate in lunchtime Mass sessions.
22. Maths Club - Explore and challenge your mathematical skills through engaging activities.
23. Maths Help - Receive assistance and support in understanding mathematical concepts.
24. Orchestra (Strings and Chamber) - Showcase your musical talent in an orchestral setting.
25. Piano Club - Learn to play the piano and share your musical skills with others.
26. Present for you - Charity sewing bee - Contribute to charity by creating handmade gifts through sewing.
27. Rock Group/Band - Form a band and rock out to your favourite tunes.
28. Rosary - Participate in Rosary prayer sessions.
29. Servant Leaders - Develop leadership skills and engage in service-oriented projects.
30. Skiing/Snowboarding - Hit the slopes and enjoy skiing or snowboarding adventures.
31. Songwriting Club - Explore the art of songwriting and create your own original compositions.
32. St. Vincent de Paul charity workshops - Engage in workshops and initiatives to support the St. Vincent de Paul charity.

33. Stage Challenge Dance Group - Participate in dance performances and competitions.
34. STEM Club - Explore science, technology, engineering, and mathematics through exciting projects.
35. Teenfit Morning Sessions - Engage in fitness activities and start your day with a boost of energy.
36. Volunteering - Make a difference in your community through meaningful volunteer work.

AIRPORT TRANSFERS:

Long term students – first pick-up at no charge. Short-term students – via agent or \$90.00 each way

Subsequent transfers arranged at a cost of \$90.00 each way via authorised driver or homestay arrangement.

ACCOMODATION POLICY IF LIVING IN A HOMESTAY

Two weeks’ notice or \$820.00 (\$860.00) is given to the homestay if leaving, regardless if the student moves out prior to the two-week notice period.

A homestay placement/administration fee is charged every year at \$450.00. A homestay placement fee of \$450.00 will apply to each new or change of homestay.

Homestay families are paid \$410.00 (\$430.00) per week during term break holidays. Students absent longer than two weeks, during term time, (with Principal’s approval) pay \$820.00 (\$860.00) for two weeks and then \$50 after that (to a maximum of \$400.00).

If a student leaves the homestay at the end of the year to return to their home country but wants to come back (“retain”) to the same homestay they need to advise their flight details at least one month prior to leaving. The student pays \$410.00 (\$430.00) per week up until they leave and then pays \$50.00 per week Homestay Retainer Fee (to a maximum of \$400.00), from the date of departure.

TERM DATES FOR 2026

Term 1	27 January 2026 to 2 April 2026 (New student orientation on 22 and 27 January)
Term 2	20 April 2026 to 3 July 2026
Term 3	20 July 2026 to 25 September 2026
Term 4	12 October 2026 to 11 December 2026 (TBC)

WHAT TO DO IF YOU?

- Are unable to come to school** The homestay or caregiver emails attendance@stmaryak.school.nz or phone 376 6568 press 779 for absences by 8.15am. **State your student's name, form class, and the reason for the absence.**
- Have been absent** Email attendance@stmaryak.school.nz or bring a note of absence to the office or your Form Teacher on return to school.
- Are late for school** Students must sign in at the main office.
- Have an appointment** **We discourage appointments during school time.** However should one during school time have to be made we require a note from Parent/Caregiver or International Director/Dean. A leave pass will be issued. Students must sign out at the office before leaving school. Students who are in Year 7 & 8 must be collected by the homestay parent or adult named in the note.
- Are ill while at school** Report to the school nurse between 9.00am-3.10pm, Monday-Friday. The nurse will assess you and if you need to see a doctor the international staff will arrange for you. If you need to be collected from school the Nurse will contact the homestay/caregivers.
- Have an accident** Go to the school nurse between 9.00am and 3.10pm. Outside these times, go to the school office.
- Have a leave request** For **three** days or less a letter/email needs to be submitted to the International staff or Dean. For more than three days, a letter addressed to the Principal, and your daughter's Dean. When leave is granted, a letter will be emailed to you.
- Need a uniform pass** Occasionally, a student may have a good reason for not wearing part of the school uniform. A note must be brought from home to the student's Dean and a pass will be issued for the day. If there are ongoing issues with uniform, please discuss this with the Dean. Deans will contact parents if a long-term uniform problem persists.
- Have a question about Sports** Please email sports@stmaryak.school.nz
- Have a question about Music** Please email music@stmaryak.school.nz
- Physio** Baseline Physiotherapy – www.baselinephysio.co.nz. No surcharge to St Mary's students under ACC. Call 021 866 867 or enquire through the Nurse. No GP referral required. International students qualify too.

SCHOOL UNIFORM

St Mary's College has a high-level of expectation that all students will wear their uniform with pride. This means wearing the uniform correctly and taking personal presentation seriously. Students are required to wear the correct uniform, in the correct manner, between home and school. This includes a blazer, or school jacket in winter or shirt in the summer. It is expected that the uniform is clean, always ironed and is in good condition. Make-up and nail polish is not allowed.

JUNIOR SCHOOL UNIFORM - YEAR 7-10

Shirt

A school chambray blue, short sleeved shirt with our school emblem. There is also an optional chambray blue long sleeve shirt for the winter.



Skirt

Royal blue school skirt worn just above the knee



Cardigan

Navy blue school cardigan which zips up the front with the school emblem on it. NB Only to be worn at school.

Blazer

Royal blue with navy stripe blazer to be worn at school events, school assemblies and in public.



SENIOR SCHOOL UNIFORM – YEAR 11-13

Shirt

A white, short sleeved shirt with the school emblem.



Skirt

Royal blue school skirt to be worn just above the knee.



Navy full length school skirt to be worn in Year 12-13.

Year 11

Year 12-13

Cardigan

Navy blue zip up cardigan with the school emblem in Years 11-12. Red cardigan in Year 13. NB – Only to be worn at school.



Year 11-12

Year 13

Blazer

Navy blazer to be worn at school events and school assemblies and in public.



Year 11

Year 12-13

Shoes

Year 7-11 plain black leather lace up school shoes in Term 1-4, but in Term 2 & 3 are compulsory (no sport shoes, heels, boots, canvas or beach shoes are allowed). This includes Chucks, Vans or similar)

Sandals

In Terms 1 & 4 students can wear black Roman sandals or "Safari" sandals (without socks)



Year 12-13

Flat plain black leather shoes covered toe without any decoration or ornamentation. No stitching on the shoes other than black. (No sport shoes, boots, heels, canvas or beach shoes are allowed).

Socks/Stockings

Year 7-11 Students may either wear the current fold over, white ankle socks or the short white ankle socks. In Terms 2 & 3 black stockings (not knee highs) may be worn.

Year 12-13 Term 1 & 4 black ankle socks are required. Term 2 & 3 black stockings can be worn.

PE Gear

Royal blue shirt and royal blue PE shorts. Plain sports shoes with non-marking soles and plain white ankle socks. A St Mary's College sports tracksuit may be worn.



Swimming Cap

A swimming cap is a compulsory item for PE (preferably in the house colour). Students will not gain access to the pool without wearing a cap, which can be purchased from the accounts office.



Swimsuit

Dark coloured, one-piece swimsuit.

Other Uniform Items:

Scarf - Plain navy blue or black scarf (optional in winter only)

Jacket - A regulation school jacket/anorak in winter is available (optional)

Umbrella - School umbrella (optional)

Raincoat - Plain, navy-blue raincoat may be worn over the blazer outside in wet weather

Hair - Hair which is shoulder length or longer must be tied back.

Natural hair colour only. Students may wear plain navy or black ribbons (Year 7-12 Blue and Year 13 red). Narrow blue or black headbands. Elastic hair tie.

Jewellery - One small, metal, stud earring in the lower lobe of each ear. No pearls, diamonds, nose studs or sleepers. A small crucifix or cultural taonga (for example, pounamu or hei tiki) may be worn. No other jewellery to be worn.

Uniform items can be purchased from either Prestidiges Schoolwear, email uniforms@prestidiges.co.nz, website- prestidiges.co.nz/school-wear/ - Ph 358 1680 or St Mary's College Second-Hand Uniform Shop Email - office@stmaryak.school.nz.

SECOND-HAND UNIFORMS COST AROUND \$300.00

The second hand uniform shop is located in the MK Centre, the shop is open Wednesday, lunchtime for students and after school (3.20pm – 3.50pm) for parents/caregivers, in term time only during the school year.

If you are only at the school for one term, you can wear your own school uniform.

NEW SCHOOL UNIFORM SUPPLIERS – PRESTIDGES - APPROX \$600

St Mary's College uniforms are supplied by Prestidges Schoolwear

65 New North Road,

Eden Terrace

Auckland

Ph. 09 358 1680

Email: <https://prestidges.co.nz/>

Shop hours are as follows:

Monday - Thursday	9.00am - 5.00pm
Friday	9.00am - 4.00pm
Saturday	9.00am – 1.00pm

NAME YOUR UNIFORM & LOST PROPERTY

We strongly recommend to you to **NAME YOUR UNIFORM** and any other items that you bring to school. Sadly, we get so much lost property! We love returning lost property to its rightful owner, but we can only do this if items are clearly named with first and last name.

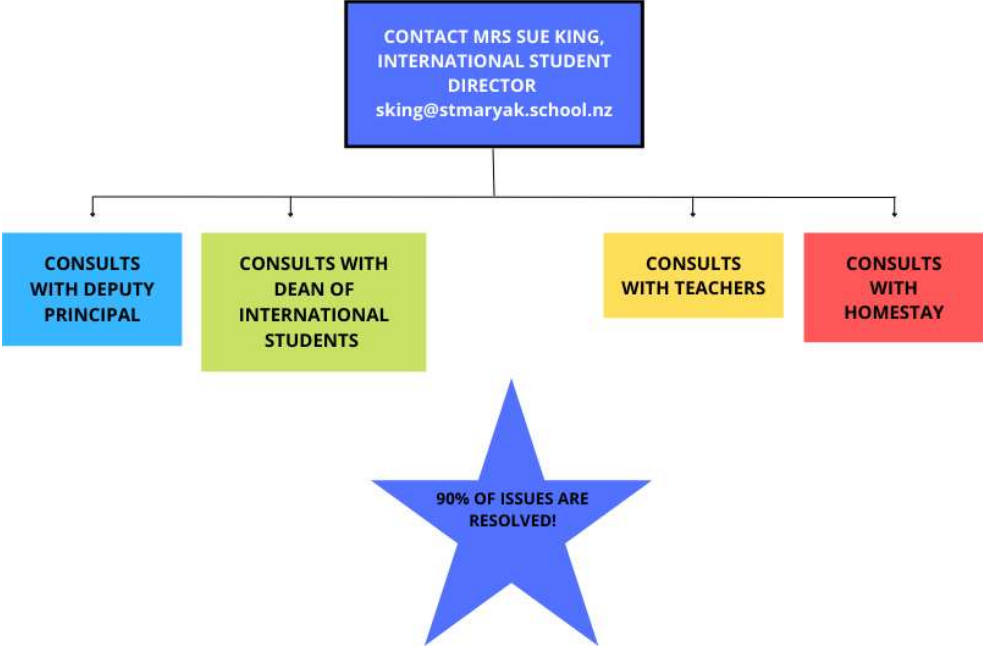
Lost property items can be viewed Monday to Friday outside the Second-Hand uniform shop on the lower level of the MK Centre locker room.

SWIMMING IN TERMS ONE AND FOUR (NEW ZEALAND'S SUMMER)

St Mary's has a heated 30m swimming pool that is open in terms one and four. Swimming is compulsory for Years 7-10 in their Physical Education classes so students need to bring a one piece swimming togs or a bathing costume, preferably in a dark colour. Swimming caps are compulsory and can be purchased from school. Goggles are recommended.



THERE IS A CODE OF PRACTICE TO LOOK AFTER INTERNATIONAL STUDENTS. IF YOU DO NOT THINK YOU HAVE BEEN TREATED FAIRLY OR HAVE A GRIEVANCE OR COMPLAINT, FOLLOW THIS GUIDELINE.



IF THE GRIEVANCE OR COMPLAINT IS NOT RESOLVED SEE THE INTERNATIONAL DIRECTOR TO FIND OUT THE PROCESS FOR LODGING A COMPLAINT OR VISIT <http://www.nzqa.govt.nz/about-us/make-a-complaint/make-a-complaint-about-a-provider/>

For more information on the complaint process, students can contact NZQA on 0800 697 296.